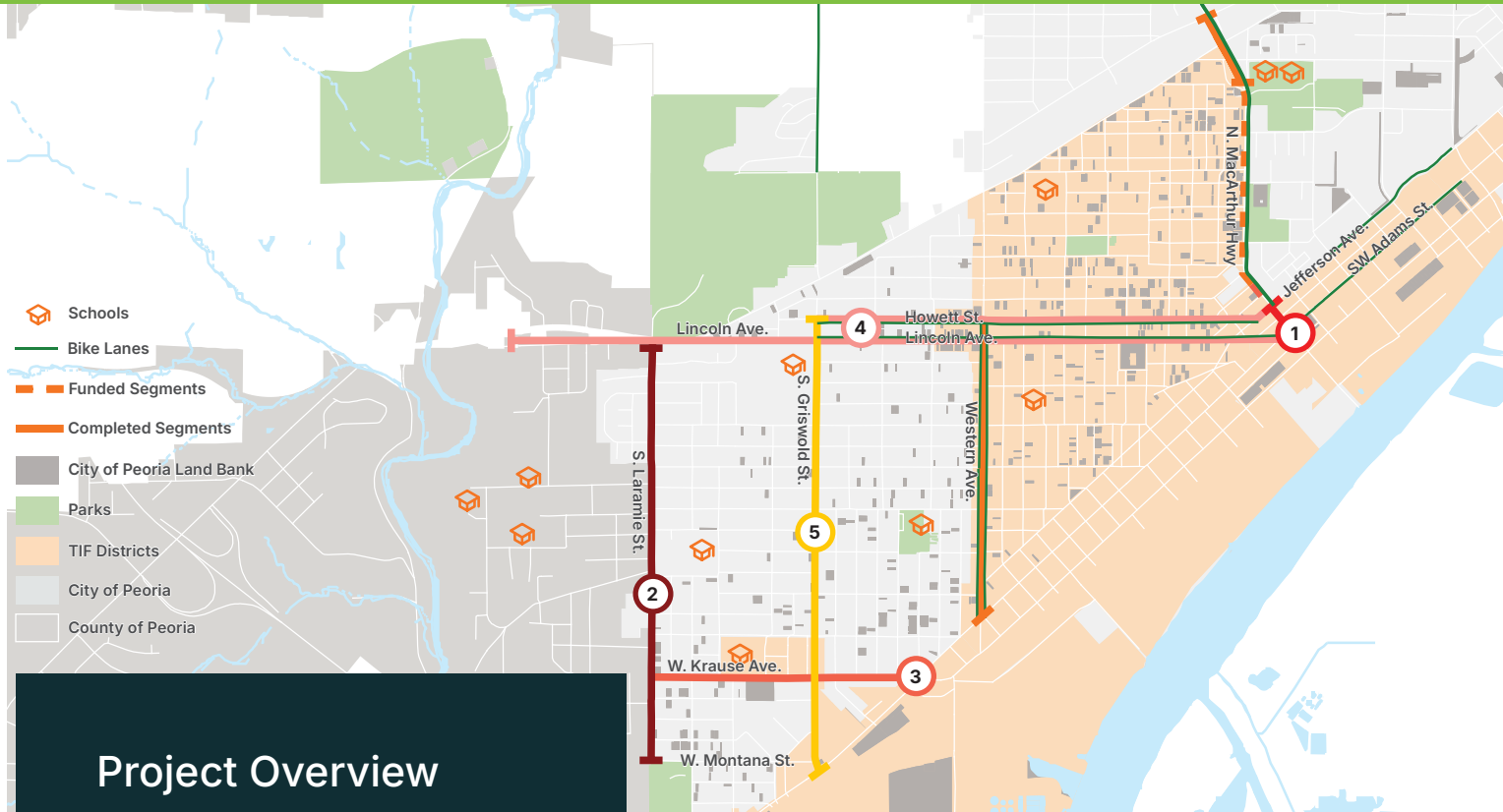
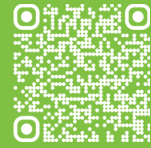


# South End Neighborhood

## Community Revitalization Catalyst



### Project Overview

**EST \$78.55MM**

The proposed projects establish a foundation for continued economic and community development in Peoria's historical South End community.

### KEY THEMES

- Schools Access
- Bicycle and Pedestrian Facilities
- Public Parks
- Employment Connections
- Economic Development Catalyst

### Segments

<b>1</b>	<b>N MacArthur Hwy reconstruction</b> from W. Howett Street/IL-116 south to S.W. Adams Street
<b>2</b>	<b>S Laramie Street redesign and reconstruction</b> extending from W. Lincoln Avenue to W. Montana Street
<b>3</b>	<b>W Krause Avenue redesign and reconstruction</b> from S. Laramie Street to S.W. Adams Street
<b>4</b>	<b>W Howett Street and W Lincoln Avenue (IL-116) reconstruction</b> extending from S. Western Avenue to Harmon Highway Bridge
<b>5</b>	<b>S Griswold Street redesign and reconstruction</b> from W. Howett Street to S.W. Adams Street

# Project Description

## South End | Community Revitalization Catalyst

The South End is a historical residential area along the Illinois River, advantageously located near Peoria's Downtown, Warehouse, and Distillery districts. Despite its prime location, the neighborhood has been weakened by the major loss of employment centers that eroded the local economy and left a legacy of disinvestment.

In recent years, the City and County of Peoria have rallied with the Peoria Housing Authority and various agencies and non-profits to turn the tide. The City of Peoria and Peoria Housing Authority have engaged in a Choice Neighborhoods Initiative Planning process that could result in a \$500MM implementation grant; Viridis Chemical announced its relocation to the area's new Distillery District; the Illinois Department of Transportation plans to reconstruct two community corridors, W. Lincoln Avenue and W. Howett Street (IL-116/8); and the City has been strategically acquiring properties for redevelopment.

To facilitate continued community revitalization, outdated transportation infrastructure and a lack of pedestrian and bicycle facilities must be addressed. Recent subarea plans for the N. MacArthur Corridor and S. Western Avenue Corridor have emphasized Complete Streets roadway reconstruction as the foundation for community and economic development initiatives. These projects seek to accelerate the South End's positive momentum by expediting the reconstruction of influential corridors.

## Quick Facts

### Project Type

- Roadway Redesign and Reconstruction
- Multi-Modal Network Expansion

### Jurisdictions

- City of Peoria
- County of Peoria
- Greater Peoria Mass Transit District
- Illinois Department of Transportation (IDOT)
- Limestone Township
- Peoria Park District

### Districts

- US Congressional District 17
- Illinois State House District 92
- Illinois State Senate District 46

## Next Steps



### Phase II N. MacArthur Highway Redesign

Conduct community engagement and preliminary engineering for the second phase of the N. MacArthur Highway reconstruction project extending from W. Howett Street/IL-116 to SW Adams Street.

### IL-116/W. Howett Street and W. Lincoln Avenue Reconstruction



Support the Illinois Department of Transportation in project community engagement activities, design processes, and communications.



### W. Krause Avenue Redesign

Conduct community engagement and preliminary engineering to implement a Complete Streets retrofit of the existing roadway.



### S. Laramie Street Redesign

In a joint City-County project, complete a corridor study to recommend land use updates & transportation infrastructure design elements.



### S. Griswold Street Redesign

Conduct community engagement and preliminary engineering to implement a Complete Streets retrofit of the existing roadway.

