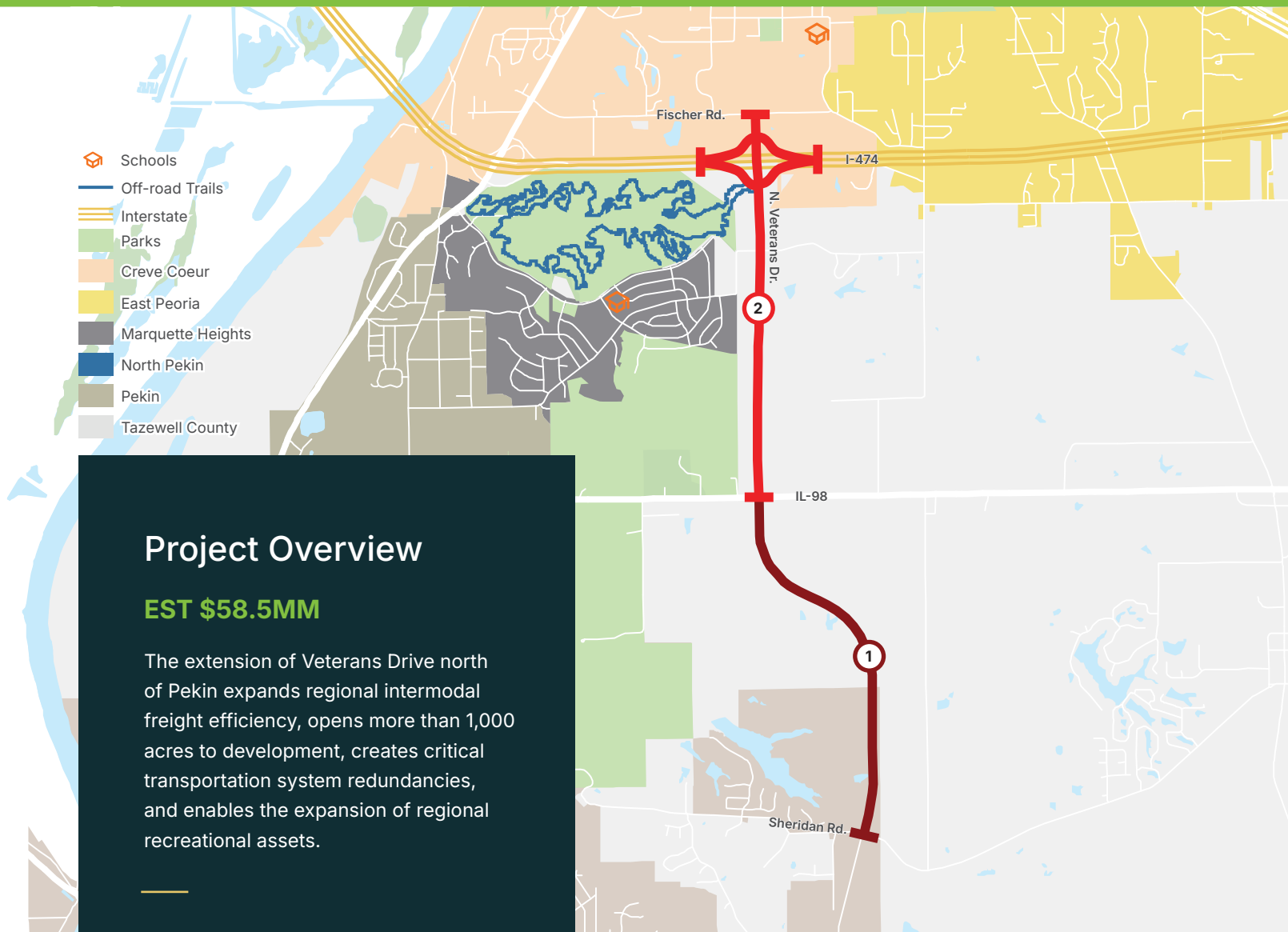
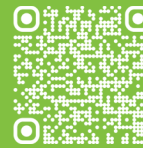


# North Veterans Drive

## Roadway Extension & Improvements









### Project Overview



**EST \$58.5MM**

The extension of Veterans Drive north of Pekin expands regional intermodal freight efficiency, opens more than 1,000 acres to development, creates critical transportation system redundancies, and enables the expansion of regional recreational assets.

### KEY THEMES

-  Regional Connector
-  Bicycle and Pedestrian Facilities
-  Public Parks
-  Employment Connections
-  Recreational Amenity
-  Economic Development Catalyst

### Segments

-  **Phase I Veterans Drive Extension** from Sheridan Road to IL-98
-  **Phase II Veterans Drive Extension** extending from IL-98 to Fischer Road, including a new interchange with I-474

# Project Description

## North Veterans Drive | Roadway Extension & Improvements

The proposed project extends Veterans Drive as it bypasses downtown Pekin, connecting it to I-474 and the Village of Creve Coeur. The new roadway expands the City of Pekin's intermodal capacity, complementing its growing rail and barge infrastructure. It offers an efficient route for freight trucks that otherwise use narrow downtown streets, causing congestion due to the numerous intersections and high pedestrian traffic.

The project also paves the way for significant expansion of the City's industrial and residential areas. Pekin recently entered into an agreement to purchase a 1,000-acre property north of the City, adjacent to the proposed roadway. Once annexed, the property will increase Pekin's current land area by 10% and create new opportunities for greenfield industrial development and home construction.

Beyond Pekin, the project enables new development opportunities for the Village of Creve Coeur and enhances connectivity for the Village of Marquette Heights and the Village of North Pekin. The roadway reduces travel time to employment centers and creates a critical redundancy for the County's transportation network. Finally, this initiative presents the most practicable path for the development of a vital regional bicycle and pedestrian connection between Creve Coeur, McNaughton Park, Independence Park, and Pekin.

## Quick Facts

### Project Type

- Roadway Extension
- New Multi-Use Path
- Freight/Industrial Infrastructure

### Jurisdictions

- City of Pekin
- Village of Creve Coeur
- County of Tazewell
- Creve Coeur Park District
- Greater Peoria Mass Transit District
- Groveland Township
- Illinois Department of Transportation (IDOT)
- Pekin Park District

### Districts

- US Congressional Districts 16
- Illinois State House Districts 87
- Illinois State Senate Districts 44

## Next Steps



### Industrial Park subarea planning

Conduct subarea planning for the Industrial Park, including residential and commercial build-out scenarios, land use and zoning recommendations, and conceptual roadway design.



### Benefit-Cost Analysis (BCA)

Update the project's BCA to consider the Industrial Park and updated designs for roadways and bicycle and pedestrian facilities to quantify their anticipated benefits.



### Phase I and II roadway construction

Conduct preliminary engineering and community engagement; coordinate with Illinois Department of Transportation.

